

COMMUNITY BASED RENEWABLE ENERGY PROJECT

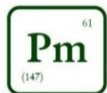
CREATING ALTERNATIVE ECONOMIC SCENARIOS FOR MINING
COMMUNITIES

*PRESENTATION AT THE 2ND SOUTHERN AFRICAN ADAPTATION
COLLOQUIUM, 7/07/2016*



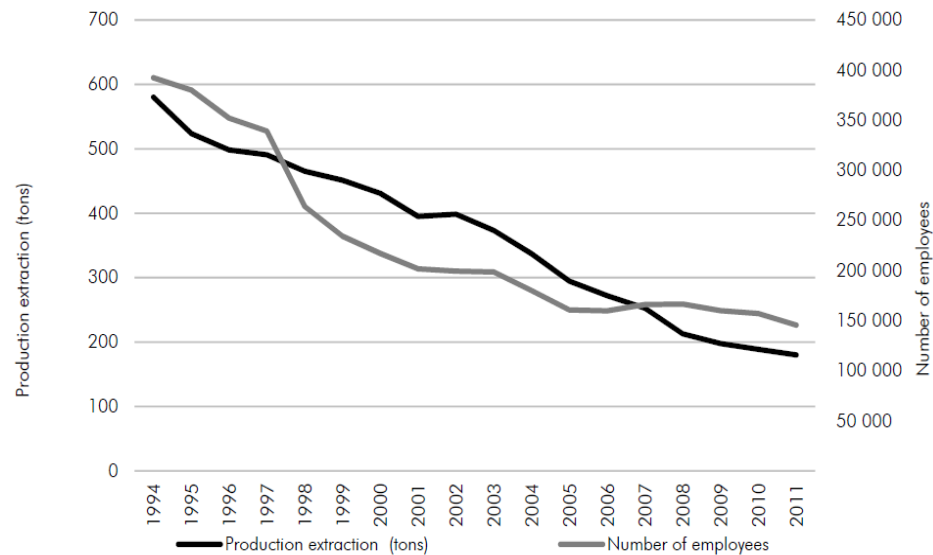
British
High Commission
Pretoria

PROMETHIUM
C A R B O N

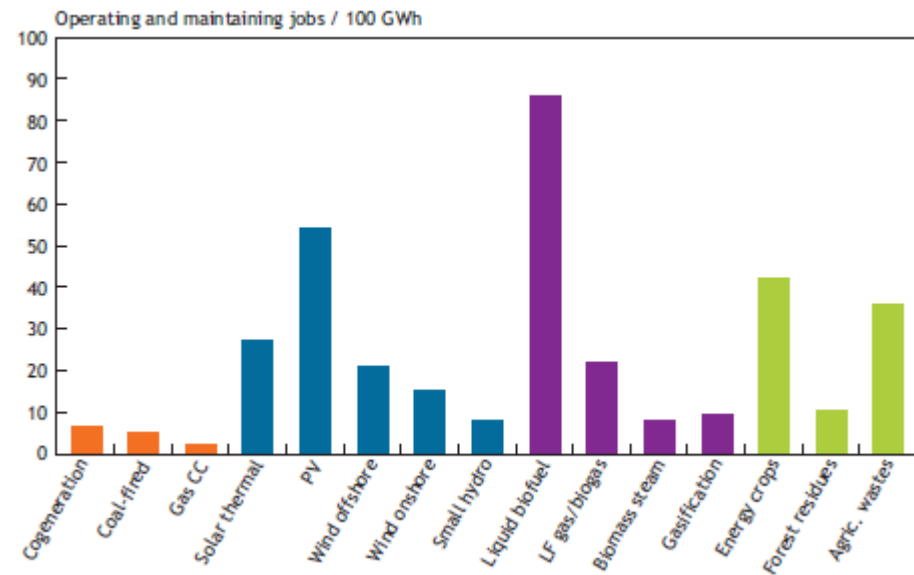


Changing economic landscape

The economic landscape in South Africa is changing – leading to a constant downward trend in some parts of the mining sector



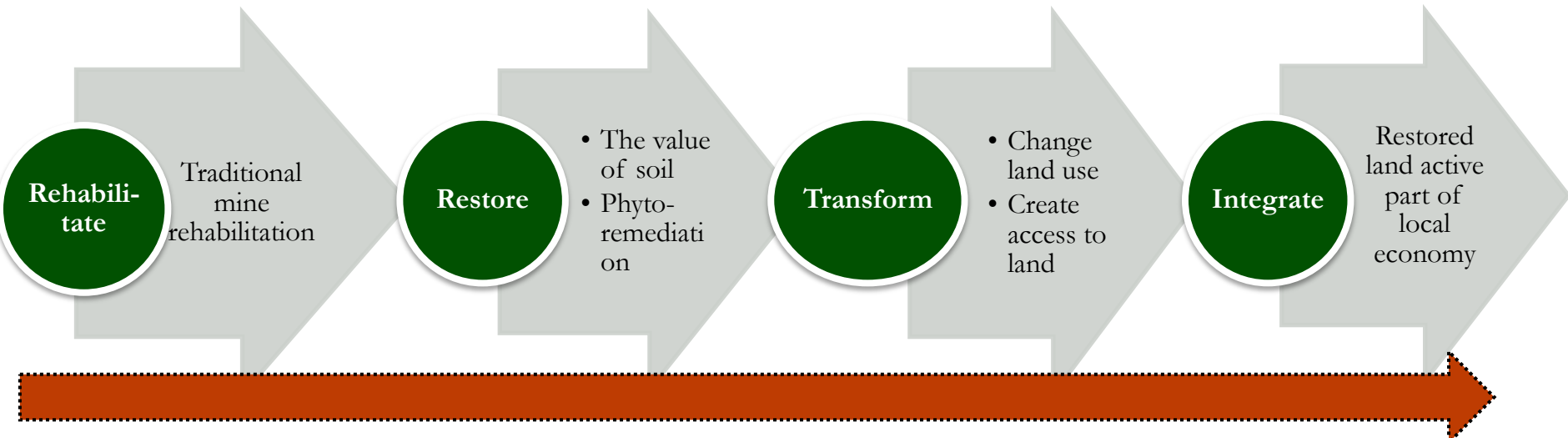
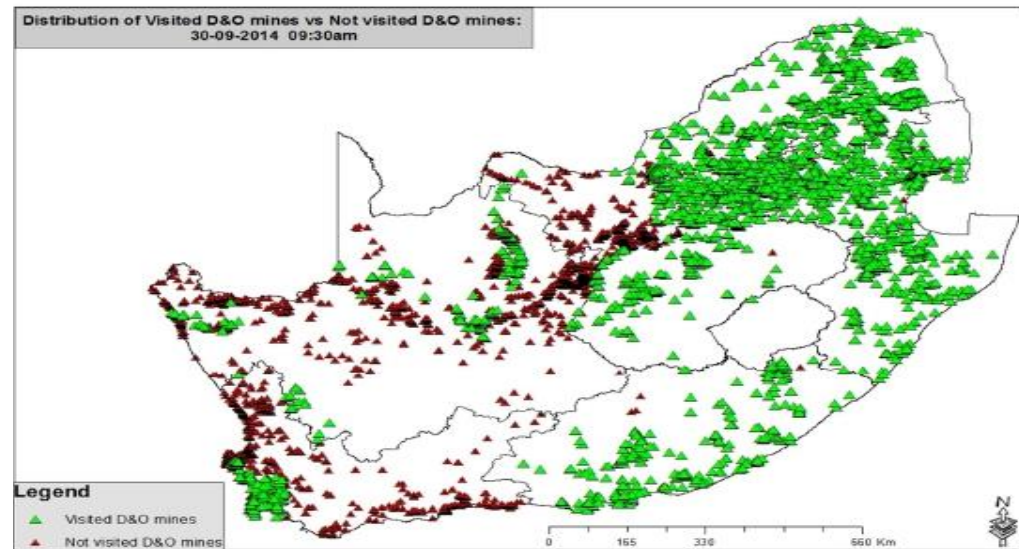
Employment in the South African gold mining industry



Employment requirements of energy projects

Mine land rehabilitation unlocking land value

Derelict and Ownerless Mines in South Africa



Changing land from a financial liability to a financial asset

Recognise the role of communities



Acknowledge

- Interlinked social challenges
- Post mine life job losses

Uplift

- The value of community based projects
- Employment creation

Involve / empower

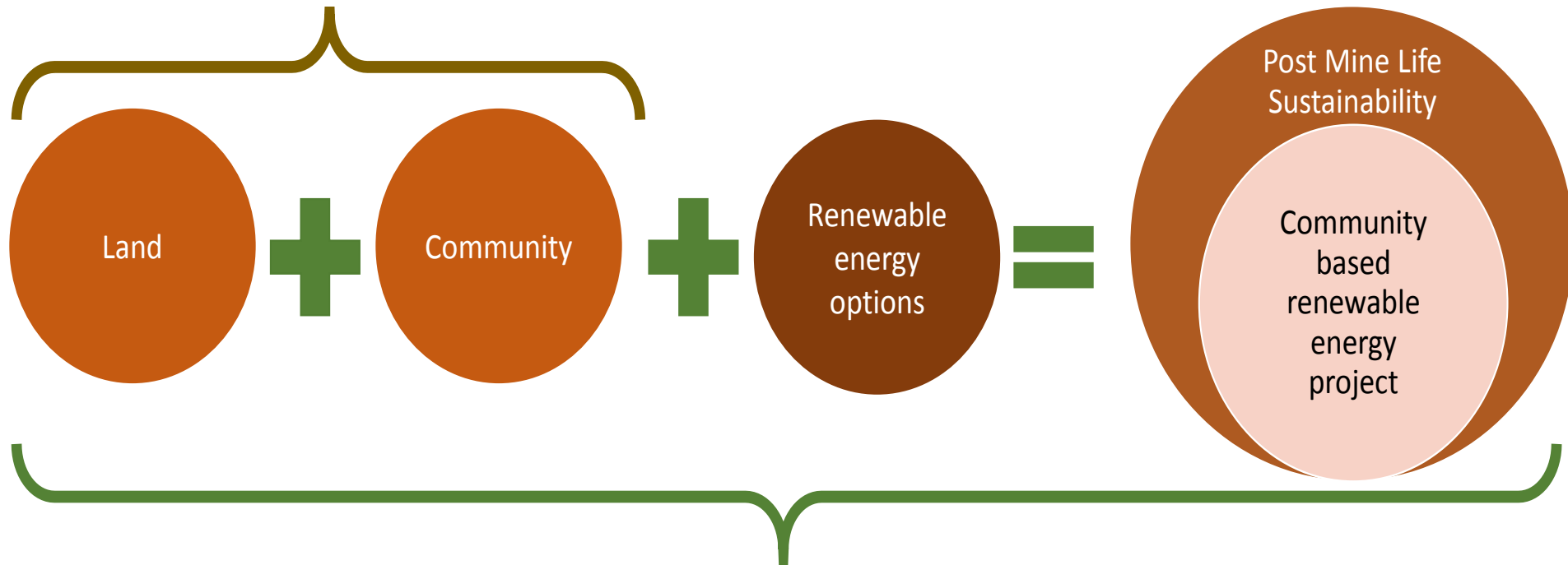
- Features of community development

Integrate

- Integrate with mine SLP
- Building resilience

The components of the Project Concept

Legacy of 150 years' mining in South African



Solution offered by using mine impacted land for sustainable renewable energy supply

Project Benefits

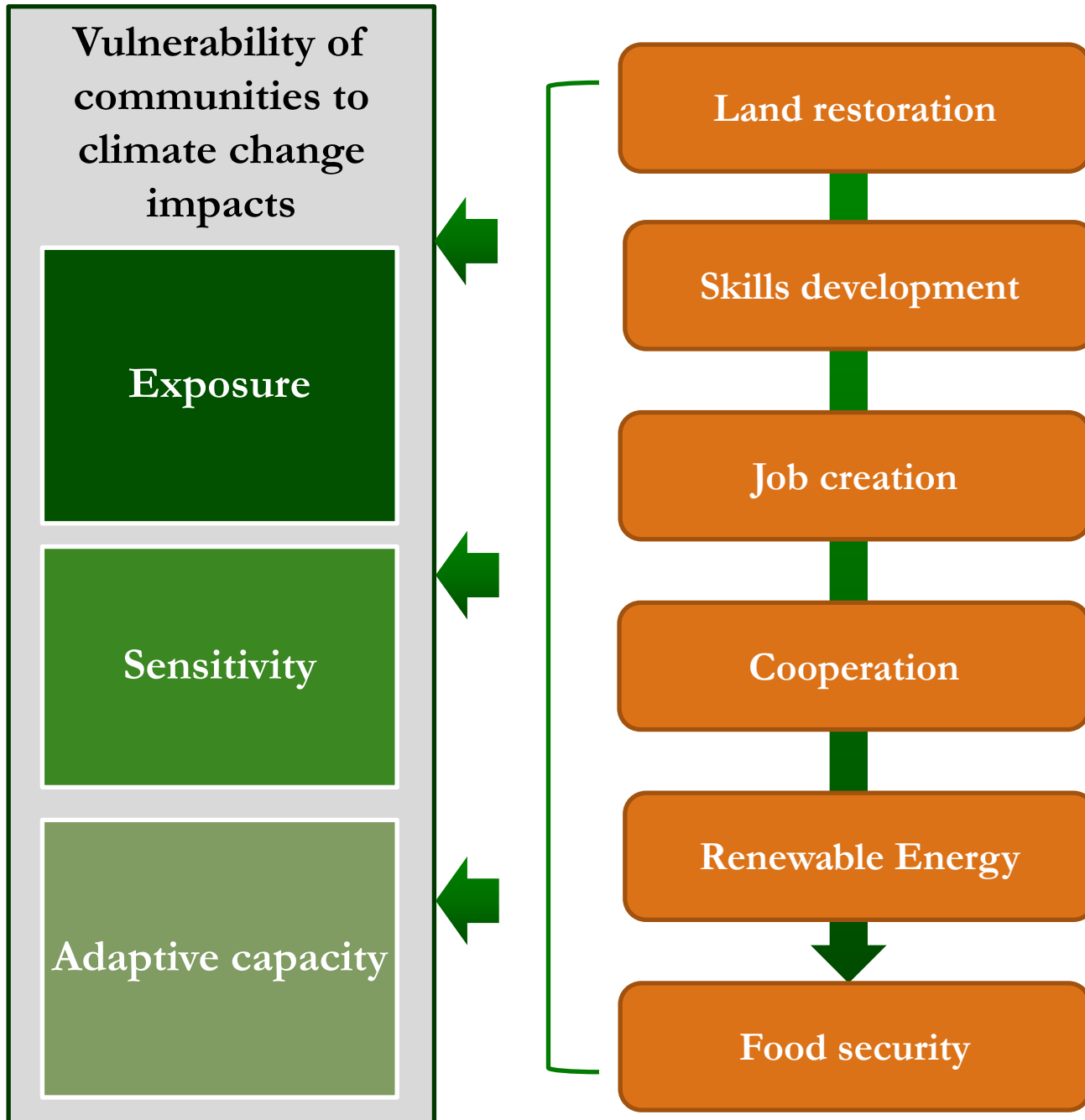
Adaptation related project benefits include:

- Economic alternatives for post mine life;
- Improved energy security;
- Creation of employment opportunities post-mine life;
- Land restoration; and
- Enable cooperation between mining companies and local government to support socio-economic development.

Project Benefits

This project concept addresses 14 of the 17 global Sustainable Development Goals.





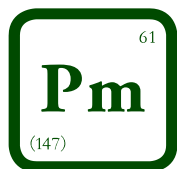
Conclusion

This is a triple top-line project because it starts off in the design phase by targeting the triple bottom-line.

- **People:** Reducing the **sensitivity** of local communities through the development sustainable post mine life employment.
- **Planet:** Restoring natural ecosystems to enhance **adaptive capacity** of the land.
- **Profit:** Ensuring long-term means to stay in business and manage **exposure** to risk.

PROMETHIUM

C A R B O N



www.promethium.co.za



0861 CARBON



www.facebook.com/PromethiumCarbon



@robbielouw



@harmkeimmink

